



# MODULAR BUILDINGS & CONTAINERS PRODUCT GUIDE





## TABLE OF CONTENTS

THE LARNEC® DIFFERENCE .....	5
LARNEC® MODULAR BUILDINGS & CONTAINER MODIFICATION RANGE .....	6
Sentry™ 200.CD / 200.BF .....	8
Sentry™ 200.PB / 200.PBIN / 200.PB-3S .....	10
Sentry™ 250.PBRJ / 250.PBRJRS .....	12
SUPPLIED HARDWARE .....	14







MAKE  
SURE  
IT'S A  
**LARNEC<sup>®</sup>**  
DOOR.



## THE LARNEC® DIFFERENCE



### PROUDLY AUSTRALIAN MADE AND OWNED.

With manufacturing facilities in Metro & Regional Victoria, we are proud to be Australian Made. We source steel and timber from the best Australian mills and our doors are manufactured to the highest standards.

Larnec® is a family-owned Australian company with a keen focus on quality. We specialise in the manufacture of high quality pre-hung shed and garage doors.

Our **Sentry® Personal Access Door** range is a market-leading product, specifically designed by our passionate and experienced team of professionals and manufactured right here in Australia to the very highest standards – durable products, that are easy to install quickly – while maintaining our focus on providing quality, cost-effective solutions for our customers.

We understand the challenges that the modular buildings and shipping container modification industry face, and have spent several years developing and refining our products to provide best practice solutions and mitigate common issues.

Larnec® doors are built to withstand harsh Australian conditions and ensure that year after year, our **Sentry® Personal Access Doors** are the perfect choice for your modular buildings or shipping container modification.

Our Modular Buildings & Container products are suitable for a range of applications and facilities including mining, construction and modified containers, and the full range of **Sentry® Personal Access Doors** can be provided with customised upgrades, locksets, and sizing to ensure your door perfectly meets your needs.



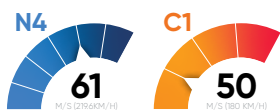
### CERTIFIED WIND RATED

WIND RATED FOR **GENERAL PURPOSE**  
REGIONS: A,B



TESTED IN ACCORDANCE WITH AS/NZS 1170.2:2011

WIND RATED FOR **DOMESTIC**  
CLASSIFICATION



TESTED IN ACCORDANCE WITH AS 4055:2012

## LARNEC® MODULAR BUILDINGS & CONTAINER MODIFICATION RANGE

Our Modular Buildings & Container Modification range has been developed in consultation with industry experts – so you can trust that our versatile range of doors and jambs will be the perfect solution for your project.

Our pre-hung door solutions are manufactured to ensure superior performance and long-lasting quality appearance. The entire range of Certified Wind Rated doors have been rigorously compliance tested, and are manufactured with the best available hardware.

The strong multi-fold profile of our jambs has been designed with minimised weld points to maximise the inherent strength and stability of our product.

A medium density polystyrene core provides the 200 series doors with additional strength and security to your structure, with the benefit of further noise reduction. Fixing points are included for closers and furniture.

All 250 and 200 series products are customisable to your exact requirements, with upgrade options and added accessories available.

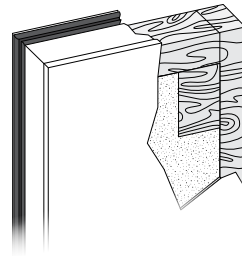
**Larnec®** Modular Buildings products are ideal for installation into coolroom panels (all thicknesses and cladding types) and prefabricated panelling as used in the construction of portable buildings.

**Larnec®** Container Modification products are the perfect solution for installation into traditional container steel wall profiles.

Available in the complete Classic & Contemporary ranges of

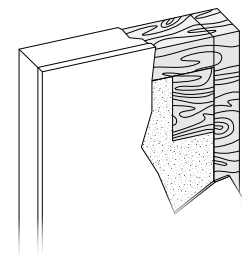
**Colorbond®** steel colours or **Zincanneal®**, all our Modular Buildings & Container Modification products come with a 2-year warranty for your peace of mind.

### SENTRY™ 250 DUAL SKIN SERIES



The semi-solid core for the **Sentry® 250 series** consists of medium density polystyrene surrounded by an internal sub-frame made of kiln-dried hoop pine. It includes hardware fixing points for the closer and lock blocks and is fully enclosed on faces and sides with two **Colorbond®** steel sheets, fixed with a two-part polyurethane adhesive. The rebated edges of the door leaf are designed to overlap the door jamb edge for secure interlocking closure. A batwing perimeter seal made of extruded PVC is fitted for weather and acoustic insulation.

### SENTRY™ 200 DUAL SKIN SERIES



The semi-solid core for the **Sentry® 200 series** consists of medium density polystyrene surrounded by an internal sub-frame made of kiln-dried hoop pine. It includes hardware fixing points for the closer and lock blocks and is fully enclosed on faces and sides with two **Colorbond®** steel sheets, fixed with a two-part polyurethane adhesive.





## SENTRY® 200 DUAL SKIN SERIES 200.CD / 200.BF

### FIT FOR PURPOSE PRE-HUNG DOOR SOLUTIONS FOR SHIPPING CONTAINER MODIFICATIONS.

Our **Sentry® Personal Access Door** solutions for shipping container modifications are easy to install, durable and built to last making it the market leader in the shipping container modification industry.

The doors in this series are manufactured with a medium density polystyrene core for enhanced thermal performance, pre prepped for additional hardware and are wrapped in dual skin **Colorbond®** or **Zincanneal®** steel sheeting for added strength and security. The multi-folded, pressed and welded door jambs ensure long-term stability and durability, maintaining the appearance and performance for years after installation.

Our box frame design has been specifically engineered for a fast and easy weld into the container. With built-in weather flashing and custom options available such as viewing panels and air relief grilles, it's the perfect all-in-one solution for your installation needs.

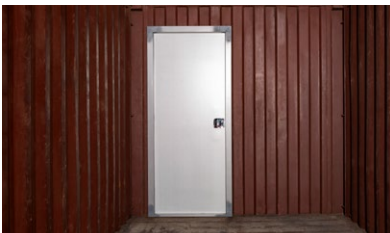
Our shipping container doors are supplied with flush locks for easy yard storage. If you have specialty access needs, we can supply a Box Frame with a ramp sill and disabled compliant lock, designed to ensure compliance with the Access for People with Disabilities Standards: AS1428/1 and NCC D2.15 & D3.3, particularly for wheelchair traffic.



#### SENTRY® 200.CD

- » Semi-solid core
- » 4-sided jamb
- » Flush lock

PRODUCT FILE CODE	DOOR SIZE (H x W x D)
200.CD.820	2040 x 820 x 37
200.CD.920	2040 x 920 x 37
200.BF.820	2040 x 820 x 37
200.BF.920	2040 x 920 x 37
200.BF.1100	2040 x 1100 x 37



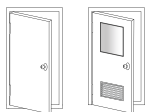
#### SENTRY® 200.BF

- » Pre-hung
- » Weld-in box frame
- » Flush lock

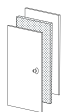




CONFIGURATION OPTIONS



STRUCTURE



ATTRIBUTES



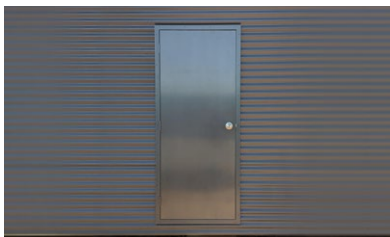
## SENTRY® 200 DUAL SKIN SERIES 200.PB / 200.PBIN / 200.PB-3S

### THE MARKET LEADING PRE-HUNG, PERSONAL ACCESS DOOR FOR MODULAR BUILDINGS.

Our **Sentry® Personal Access Door** solutions for portable buildings are easy to install, durable and built to last making it the market leader in the portable building construction industry.

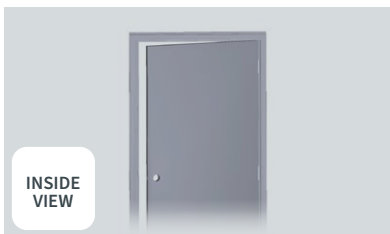
All doors in this series are pre-fitted with batwing perimeter seals along the jamb for added protection, manufactured with a medium density polystyrene core for enhanced thermal performance, pre-prepped for additional hardware and are wrapped in dual skin **Colorbond®** or **Zincanneal®** steel sheeting for added strength and security. These doors can also be customised with upgrades, locksets, and sizing to ensure your door perfectly meets your needs.

The two piece multi-folded, pressed and welded door jambs ensure long-term stability and durability, maintaining the appearance and performance for years after installation.



#### SENTRY® 200.PB

- » Universal handing
- » 4-sided external jamb
- » Escape function compliant



#### SENTRY® 200.PBIN

- » Inwards swing
- » Carbine PS4000-6000 Knob/Lever lock set
- » Pre-hung



#### SENTRY® 200.PB-3S

- » 3-sided frame
- » Zinc plated, powder coated hinges
- » 180° opening

PRODUCT FILE CODE	DOOR SIZE (H x W x D)
200.PB.820	2040 x 820 x 37
200.PB.920	2040 x 920 x 37
200.PB.1100	2040 x 1100 x 37
200.PBIN.820	2040 x 820 x 37
200.PBIN.920	2040 x 920 x 37
200.PBIN.1100	2040 x 1100 x 37
200.PB-3S.820	2040 x 820 x 37
200.PB-3S.920	2040 x 920 x 37

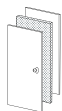




CONFIGURATION OPTIONS



STRUCTURE



ATTRIBUTES



## SENTRY® 250 DUAL SKIN SERIES 250.PBRJ / 250.PBRJRS

### THE PERFECT CHOICE FOR MODULAR BUILDINGS, WITH RECESSED JAMB OPTIONS AND PERIMETER SEALS FOR ADDED DEFENSE AGAINST THE ELEMENTS.

Like the 200 series, **Sentry® Personal Access Door** solutions for modular buildings with a rebated jamb and pre-fitted perimeter seals are easy to install, durable and built to last.

In addition to the medium density polystyrene core for enhanced thermal performance, the rebated edges of the door leaf are designed to overlap the door jamb edge for secure interlocking closure. A batwing perimeter seal made of extruded PVC provides effective defence against cold smoke, sound, dust, light, insects and weather and can be paired with bottom door seals and threshold plates for added protection.

For specialty access needs the 250.PB is ideal, with a ramp sill and disabled compliant lock, designed to ensure compliance with the Access for People with Disabilities Standards: AS1428/1 and NCC D2.15 & D3.3, particularly for wheelchair traffic.

Pre prepped for additional hardware and wrapped in dual skin **Colorbond®** or **Zincanneal®** steel sheeting for added strength and security, **Sentry® 250 series** doors can be customised with upgrades, locksets, and sizing to ensure your door perfectly meets your needs.



#### SENTRY® 250.PBRJ

- » Recessed leaf
- » Batwing seal for weather and acoustic insulation
- » Escape function compliant



#### SENTRY® 250.PBRJRS

- » 3-sided internal jamb
- » 2-piece frame
- » Ramp sill for wheelchair accessibility

PRODUCT FILE CODE	DOOR SIZE (H x W x D)
250.PBRJ.820	2040 x 820 x 37
250.PBRJ.920	2040 x 920 x 37
250.PBRJ.1070	2040 x 1071 x 37
250.PBRJRS.820	2040 x 820 x 37
250.PBRJRS.920	2040 x 920 x 37
250.PBRJRS.1070	2040 x 1070 x 37
250.PBRJRS.820H	2200 x 820 x 37
250.PBRJRS.920H	2200 x 920 x 37
250.PBRJRS.1070H	2200 x 1070 x 37

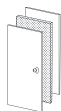




#### CONFIGURATION OPTIONS



#### STRUCTURE



#### ATTRIBUTES

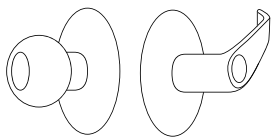


## SUPPLIED HARDWARE

We know that when it comes to door hardware, products with a proven track record for strength, security and reliability are paramount. That's why **Sentry® Personal Access Doors** are supplied with the highest quality locksets from leading brands, such as **Carbine** and **Southco**.

Built to a high standard of quality and reliability, locksets are supplied in standard configurations for the Modular Buildings & Container Modification sector (knob/lever or flush lock).

### PORTABLE BUILDINGS KNOB/LEVER



The **Carbine Combination 4000 Locksets** and **6000 Leversets** provides the convenience of a knobset on the outside and the functionality of a leverset on the inside. The tiebolt fixing allows for easy installation into standard lock preparation within the door leaf and is fully escape function compliant.

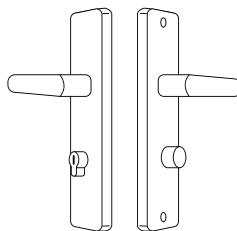
#### FUNCTION

- » Inside: Turn snib
- » Outside: Key lockable

#### ADDITIONAL INFORMATION

- » Tiebolt fixing
- » Cylinder is a 6 pin PD style brass cylinder
- » 75mm rose diameter
- » Reliable 60-70mm adjustable back set
- » Stainless steel latch-bolt
- » Supplied with 2 keys

### PORTABLE BUILDINGS LEVER/LEVER (DISABILITY)



The **Carbine Ascot PA8000-L1 Leverset** is a high grade commercial leverset with concealed fixings and a strong handle spring that will perform opening after opening. The slightly longer L1 lever design of this is fully compliant with BCA codes and Australian Standards AS1428.

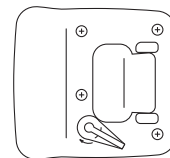
#### FUNCTION

- » Inside: Turn snib
- » Outside: Key lockable

#### ADDITIONAL INFORMATION

- » L1 lever design is compliant with BCA codes and AS1428
- » Stainless steel latch
- » Fire rated for up to 2 hours
- » Tested to 400,000 openings with no failures
- » Concealed fixing
- » Tiebolt fixing
- » Lever projection 66mm
- » 6 pin PD style brass cylinder
- » Adjustable 60mm - 70mm backset
- » Rose diameter 72mm

### SHIPPING CONTAINER MODS FLUSH LOCK



The **Sentry® Personal Access Door** range for shipping container modifications are all supplied fitted with **Southco SS3000 Series Flush Paddle Lock**, delivering style, quality, and security for your next shipping container modification - with an attractive finish, low-profile installation and ergonomic performance.

#### FUNCTION

- » Inside: Turn snib
- » Outside: Key lockable

#### ADDITIONAL INFORMATION

- » Slam latch
- » Multi point key locking
- » Flush finish





LARNEC USES LEADING HARDWARE BRANDS



**Briton**



**southco®**



LARNEC.COM.AU



**1800 527 632**

**Melbourne** 20 Mallett Road,  
Tullamarine. Victoria. 3043

**Swan Hill** 1-3 Shepherd Road,  
Swan Hill. Victoria. 3585

**Sydney** Level 1, Unit 7, 11 Lord Street,  
Botany. NSW. 2019

**LARNEC.COM.AU**

